



GRAND
INFLATABLE BOATS



Golden Line G340



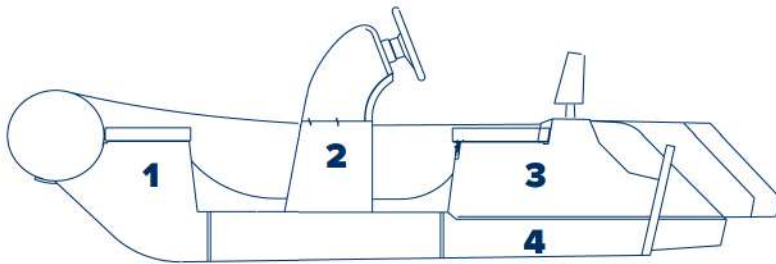
Golden Line G340 Technical Data

Length overall, cm330
 Width overall, cm176
 Length inside, cm 240
 Width inside, cm80
 Tube diameter, cm 43
 Bare boat weight*, kg129
 Transport gross weight**, kg195
 Loading capacity***,kg 580
 Engine recommended, HP.....20

Engine max***, HP 30
 Engine weight max, kg70
 Engine shaft length, inch15”(S)
 Midsection/aft deadrise, degrees17°/14°
 Bottom type RIB
 Boat design category**** D,C

Remarks:
 * - The bare boat weight is just a weight of the empty boat without any removable accessories.
 ** - The transport gross weight is the a weight of the complete boat in standard package.
 *** - Because of differences of local boatbuilding standarts The Loading capacity and Maximum Engine Power may vary by country. Please check that with your local GRAND dealers.
 **** - Boat design category under European Union Directive 2013/53/EU.

Compartment Chart

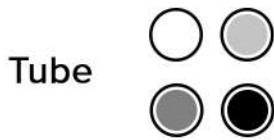


- 1 - Bow locker
- 2 - Console storage compartment
- 3 - Rear dry compartment
- 4 - Rear lower compartment

Performance Chart



Performance data are approximate for boat with light load



Standard Features

- Medium-V fiberglass hull with transom extensions and bow towing eye
- Inflatable tube with fiberglass step ends
- Bow step plate with pull-up cleat and navigation light
- Low profile steering console with stainless steel handrail
- Molded in bow and rear storage with cushion
- Two stainless steel side rails for rear seat
- Tree towing bow eyes, two front and two rear lifting eyes, two rear cleats

Optional Equipment

- Removable side seat package
- Built-in fuel system with 40 liter tank and sender
- Bimini top
- Overall cover, console cover
- Overpressure valve
- Keel and tube protector packages
- SILVERTEX upholstery upgrade
- SeaDek antiskid set

Grand Luxe Features

- Electric package with nav. lights, bilge pump, electric horn, switches, battery switch and complete wiring

YOUR LOCAL DEALER

